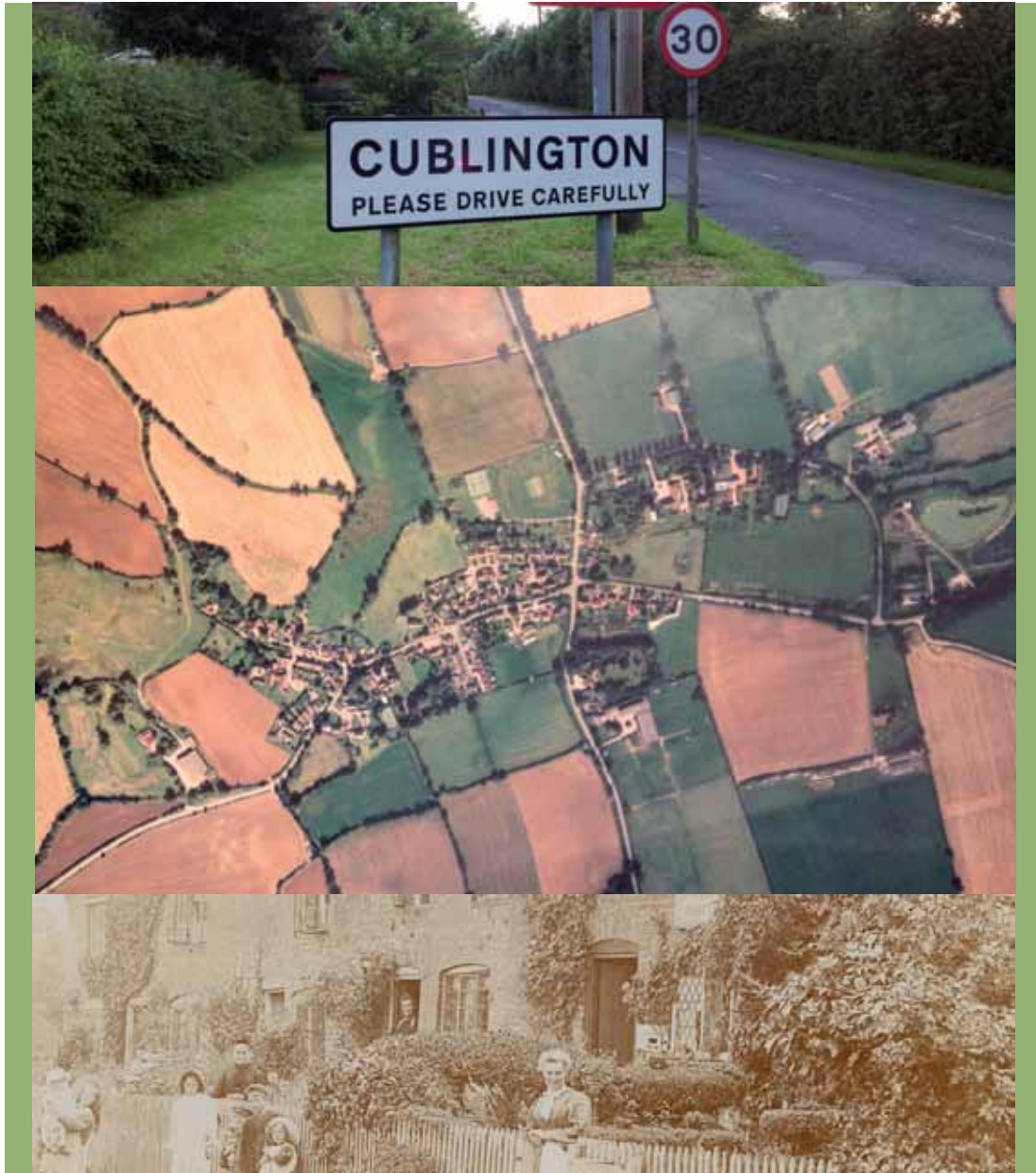


CUBLINGTON PARISH COUNCIL



PARISH PLAN 2012

CUBLINGTON PARISH COUNCIL PARISH PLAN 2012

INTRODUCTION

This Parish Plan has been produced following consultation with the whole community and is the result of the *Village Questionnaire* completed in November 2011. It is designed to help influence decisions made by your Parish Council and also the decisions made by other Local Authorities.

Our Government, through the new Localism Bill, is devolving more control to Councils and Neighbourhoods over local housing and planning decisions. As part of this process Cublington Parish Council was asked by Aylesbury Vale District Planning representatives to provide Cublington's input into the Vale of Aylesbury Plan. This input was to take the form of residents' views on such things as future housing needs, local employment opportunities, social needs and other infrastructure requirements over the next 20 years.

In parallel with this request Cublington's Parish Council also wanted to gather information from residents on a range of other community issues. This information would guide Councillors when making decisions on behalf of residents. Cublington Parish Council chose to accomplish these objectives by conducting a written survey of all households within the Parish.

SURVEY METHOD

The survey method used a specially designed self completion household questionnaire which was delivered by Parish Councillors to all houses within the Parish of Cublington. The questionnaire contained thirty six questions which were a mixture of open ended and multiple choice questions. For every co-operating household an envelope was provided so that the completed questionnaire could be placed inside and sealed. In this way there was no possibility of identifying any particular household response, there was also no requirement on the questionnaire to provide names or addresses.

Parish Councillors also personally called on all households to collect the completed questionnaires; in some cases this meant as many as three or four call backs to ensure a result.

The survey was carried out during November 2011 and 127 houses were identified as being within the Parish of Cublington. At the time of the survey there were 7 out of the 127 houses that were unoccupied, for a variety of reasons; therefore, there were 120 possible responses. The final number of responses achieved was 106 completed questionnaires, giving a **satisfactory response rate of 88.3%**.

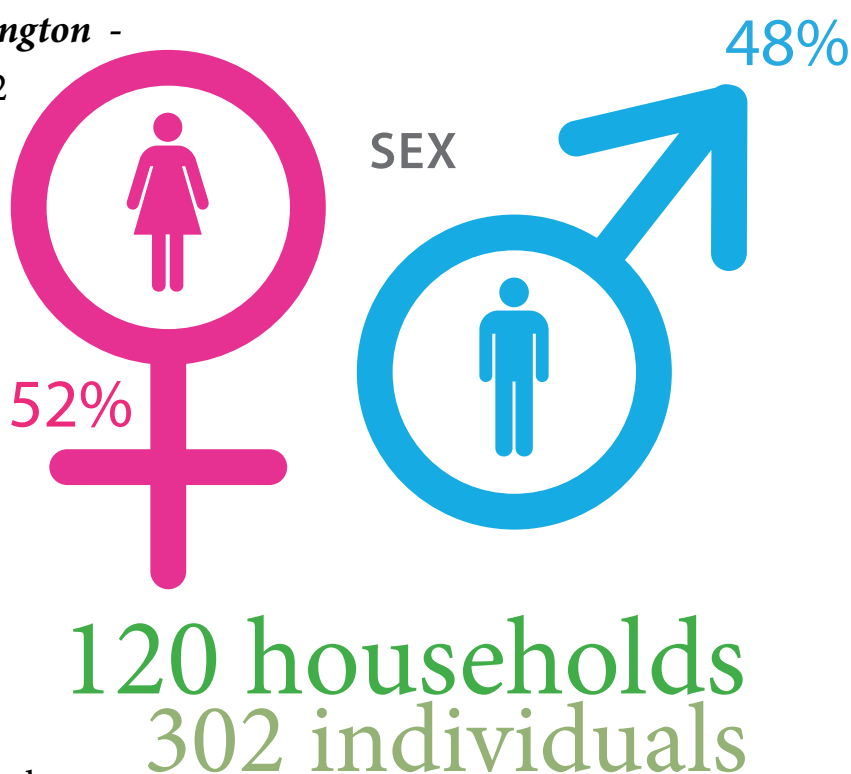
1. DEMOGRAPHICS

Note: For the purposes of this report results are grossed up to 120 households (this assumes that the demographic profile of non-respondents is the same as the respondents and that at any one time there will always be, on average, seven unoccupied properties in the Parish).

1.1 OCCUPANTS - NUMBER-SEX

Sex of individuals living in Cublington -

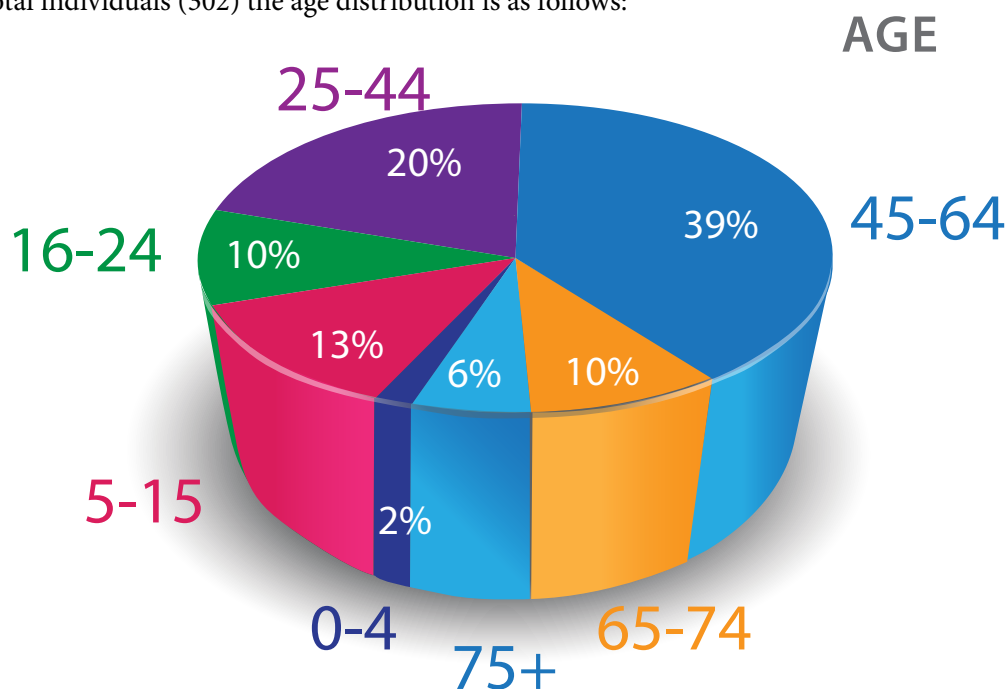
Total number of individuals = 302



The average household size is 2.5 individuals.

1.2 AGE

Of the total individuals (302) the age distribution is as follows:



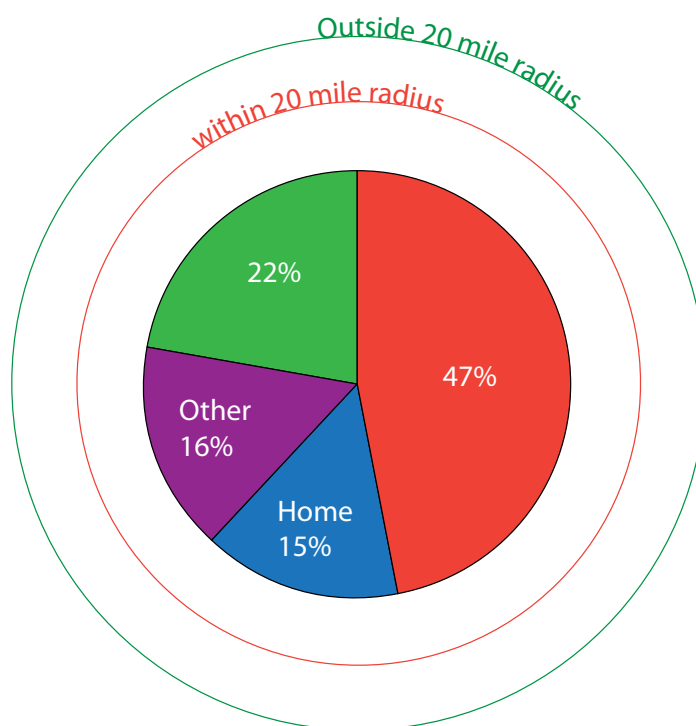
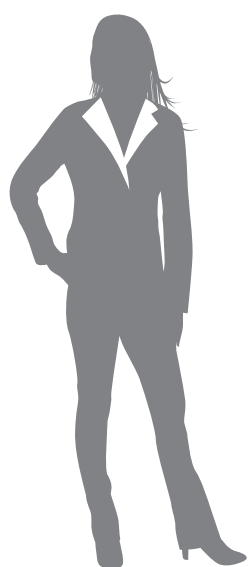
1.3 EMPLOYMENT

Of all individuals (302) there are 208 (69%) who are of working age (16-64 years inclusive).

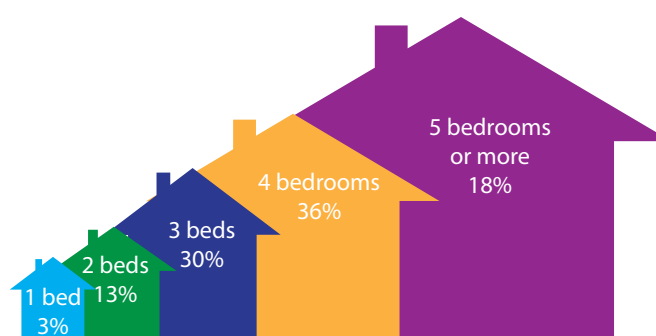
Of these working age individuals there are 152 (73%) who are working in paid employment

Of the 152 people in paid employment their place of work was:

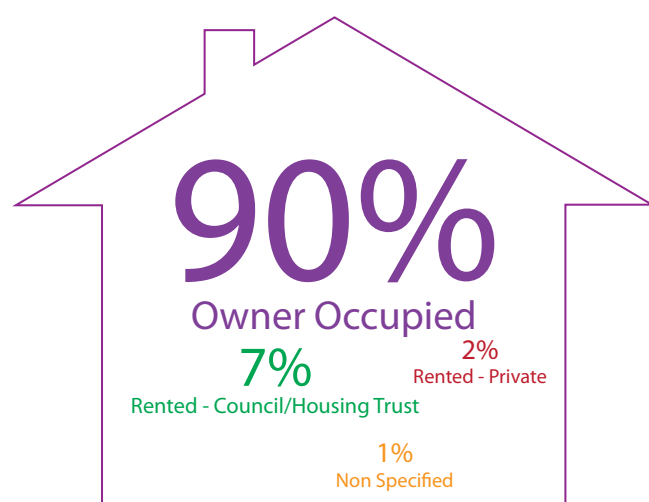
EMPLOYMENT



1.4 HOUSE SIZE-OWNERSHIP STATUS



SIZE OF HOMES



HOUSE OWNERSHIP

2. PLANNING

The majority of respondents, 70%, would like to see further development within Cublington. However, their view is that development should be restricted to about 10 houses. Cublington is a small village with only 127 houses and ten additional houses represents a significant but controlled increase. Those who want development are divided into a majority, 64.5%, who would like to see development spread over the next 20 years, and the rest, 35.5%, who see a more urgent need for more houses. A consequence of Cublington's small size is that there exists a very active community spirit and the residents fear that any expansion beyond the ten homes could erode this feature as well as potentially jeopardise the quiet and peaceful environment they value so highly.

In common with many other small villages that were built many years ago, Cublington does have a problem with cars parking on the roads, so it would be essential that any future development should avoid adding to this current problem. Many Parishioners also identified that the sewerage/ drainage facilities for the current number of houses within Cublington are already operating at maximum capacity, this in itself seriously inhibits any expansion beyond an additional ten houses. Other notable infrastructure problems identified by Parishioners were poor roads, poor broadband, electricity supply problems and lack of gas supply to the village.

The geographical location of Cublington dictates relatively high house prices and there is a concern that over time the age profile of residents could become too skewed toward older age groups. For this reason there is a preference for any new developments to be 'Affordable homes' with two or three bedrooms, this would give younger people the opportunity to purchase property in Cublington, thereby helping to maintain a more even balance between old and young families.

Within Cublington there is no obvious site for a new single development of multiple dwellings, but there are a number of possible small areas that could accommodate modest development, however, this would need the co-operation of the current landowners and this could prove difficult in the case of 'Affordable Homes'.

3. BUSINESS AND EMPLOYMENT

The majority of survey respondents, 56%, would not like to see new employment opportunities created within the Parish but almost a third of respondents disagreed with this view. Only 26% of respondents offered suggestions for employment opportunities but these were generally for small businesses like a village shop and post office - put forward mainly to overcome the inconveniences of living in a village rather than genuine opportunities for generating local employment. It is clear that amongst residents there is a strong desire to maintain the character of a rural village but Cublington's residents also enjoy a very high level of employment, which probably helps to explain why so many do not want more business developments within the Parish.



4. LIVING IN CUBLINGTON

4.1 WHAT THINGS ARE MOST IMPORTANT ABOUT LIFE IN CUBLINGTON?

Respondents selected from a list of characteristics, they could choose more than one. The percentage of all households chose the following characteristics, in order of importance:

91% - Safe Environment

86% - Peace and Quiet

78% - Sense of Community

28% - Transport Links

75% - Appearance/Cleanliness/Tidiness

42% - Easy Access to Local Towns

34% - Local Facilities

21% - Close proximity to Family

14% - School Catchment

4.2 ARE THERE ANY CONCERNS ABOUT LIFE IN CUBLINGTON?

Households were fairly evenly divided on this, with 48% having no concerns and 52% expressing one or more concerns. The concerns raised can be divided into the following categories:

Highways - 11% of all households cited volume/ speed and size of vehicles, 8% were concerned about travellers camping on the road sides and the methods used to prevent this activity (blocks and ditches), 7% cited parking issues, 2% cited lack of pavements/street lighting and one or two households mentioned roads flooding and litter.

Housing - A small number (1%) of all households mentioned the high cost of housing and light pollution from private security lights.

Amenities and Community - Some 3% of all households feared over-development of Cublington and opposed the potential construction of wind turbines at a nearby site.

Others noted by 2% or less *of households were:*

Over Use of the Recreational Facilities by the Cricket Club,
Parish Council was Ineffective,
Too many Commuters and Elderly People Living in the Village,
Lack of Community Spirit, Reduction in Public Transport,
Noise and Disruption from The Unicorn Pub late at Night,
Fear of Burglary.

4.3 WOULD HOUSEHOLDS LIKE TO SEE ANY IMPROVEMENTS TO THE VILLAGE?

Of all households: 53% wanted improvements while 47% did not want any improvements.

As expected residents responded to the concerns they expressed in 4.2 above in similar proportions.

Highways

12% of all households wanted reduced traffic speed/traffic calming through Cublington (the crossroads was specifically noted),

5% were concerned about hedgerows/pavements/road signs maintained,

3% wanted improved road maintenance and more street lighting (Silver Street was noted),

2% wanted a gas supply to the village,

2% wanted improved internet connection/mobile phone network,

2% wanted better parking facilities and

1% looked for improved sewerage/storm water system.

Housing

1% of all households wanted to see more affordable housing.



Amenities and Community

5% of all households wanted improved sports/playground facilities
(comments included: reduce amount of cricket, update interior of Biggs pavilion, a ball wall, boules and an area for sitting),

3% wanted a village shop,

3% wanted the village pond maintained,

2% wanted floral displays in the village/entry to the best kept village/Xmas tree,

1% wanted more litter bins,

1% wanted a wind farm,

1% wanted more allotments and

1% wanted a bus to Milton Keynes.



4.4 CURRENT USE OF THE UNICORN, ORCHARD GROUND, CHURCH, PAVILION AND VILLAGE HALL.

The survey asked if ***any individuals in the household*** used any of the above facilities.

The results showed that:

74% of households use The Unicorn at least once a month (42% at least once a week),

66% of households use Orchard Ground at least once a month (46% at least once a week),

34% of households use the Church at least once a month (13% at least once a week),

32% of households use the Pavilion at least once a month (8% at least once a week),

25% of households use the Village Hall at least once a month (15% at least once a week).



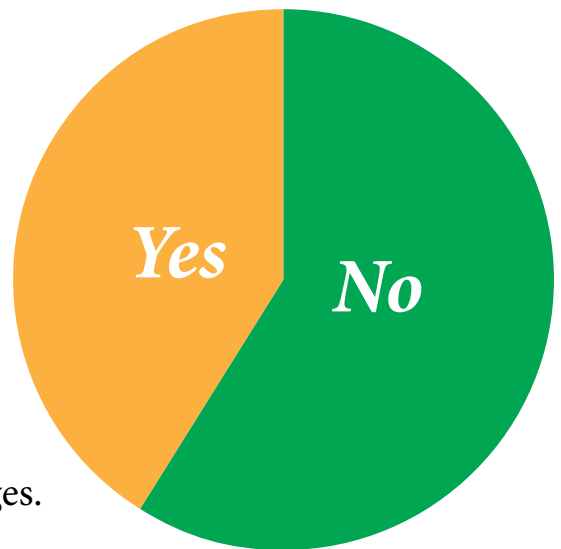
It is also interesting to look at the percentages of households that never use these facilities:

- 36% - Village Hall
- 29% - Pavilion
- 28% - Church
- 23% - Orchard Ground
- 13% - Unicorn

4.5 WOULD RESIDENTS LIKE TO SEE ANY CHANGES/ IMPROVEMENTS TO VILLAGE FACILITIES?

Of all households:

59% would not like to see any changes.



Of the remaining **41%** there were many suggestions, but, among the more popular were:

Improve what we already have - noted by almost 10% of all households.

Update the Playground - noted by 5% of all households.

Establish a Picnic Area away from the Cricket Pitch -
noted by 3% of all households.

A separate question was asked that focused specifically on the current Football facility on Orchard Ground.

It showed that of all households:

27% wanted the Football facility upgraded,

15% wanted the Football facility replaced
with a hard surface Multi Use Games Area

10% wanted a MUGA in 12 years time in the adjoining field),

2% wanted the Football facility removed

(note that 44% of all households made no comment)

4.6 CURRENT MEMBERSHIP OF CLUBS IN THE VILLAGE.

There are many active clubs in Cublington and the survey asked if any individuals of each household were members of any village clubs/societies. 52% of all households did have club/society members while 48% have no individuals who belong to any club or society.

Of all households in Cublington there is at least one person who is a member of the:

Tennis Club in 25% of households
Variety Club in 20% of households
Cricket Club in 18% of households
Allotment Society in 16% of households
Book Club in 16% of households.

(note that individuals may be members of more than one club)

Other clubs were noted:

Brisk Walkers - 6%
Choir - 4%
Table Tennis - 3%

there were nine others each of 2% or less, including Nordic Walking, Golf Society, Music Club, Oil Buying, Ladies Club, Friends of St Nicolas, TUGS.

4.7 INTEREST IN CREATING NEW CLUBS IN CUBLINGTON.

Of all households the majority, 80%, said that they would not want to see any more clubs. However, of the remaining 20% a Youth Club was noted by almost half (8% of all households), a Fitness Club(6% of all households), Art Club(3% of all households).

When the question was broadened to ask about ideas for future development of sport and/or leisure facilities on Orchard Ground or elsewhere in the village, then more respondents (41%) put forward suggestions.

A Fitness Trail was suggested by 10% of all households
Upgrading the Playground 6% of all households
Boules/Petanque 5% of all households
Ball Wall 4% of all households
More Seating Benches 4% of all households.





4.8 RECREATIONAL FACILITIES FOR YOUNG PEOPLE.

Households were asked if they thought there were sufficient recreational facilities for the young people of the village.

52% of all households said that there were sufficient facilities

36% indicated that more facilities were required for the young people and these households suggested : a Youth Club/Something for Teenagers was put forward by almost half of this group - a fifth of the suggestions from this group were for a Multi Use Games Area.

12% gave no answer



4.9 ANTI-SOCIAL CRIMINAL BEHAVIOUR.

The majority thought there was not a problem, but 17% did think there was - mainly Travellers causing problems and Mindless Vandalism of village facilities.

4.10 DO MEMBERS OF YOUR HOUSEHOLD FEEL SAFE WITH THE CURRENT LEVEL OF POLICING IN CUBLINGTON?

Of all the households:

73% did feel safe

14% did not feel safe

(13% did not answer this question)

12% of all households cited the lack of Police presence as a reason for not feeling safe.

Safety issues raised included fear of dog attack, fear of burglary and dangers arising from speeding traffic.

4.11 DO YOU CONSIDER THERE IS ADEQUATE SUPPORT FOR THE ELDERLY?

Response to this question was relatively poor with 43% **of all households** not giving an answer (although a third of this group cited insufficient knowledge to answer).

However, 41% of all households did feel there was adequate support while 16% did not. There were suggestions for improved support for the elderly:

5% of all households wanted improvements to the public transport system and/or a private car scheme.

4% of all households felt there was a need for a neighbourhood / support group.

2% of households wanted the mobile library to visit Cublington.

2% of households would like a shop/ improved shopping facility in Cublington.

In addition the need for an improved wheelchair access into the Unicorn and a “drop in” nurse clinic were suggested by a couple of respondents.



5 HIGHWAYS.

5.1 DO YOU HAVE ANY VIEWS ON THE SPEED OF TRAFFIC THROUGH THE VILLAGE?

88% **of all households** did have views, 7% did not and 5% left this question blank.

The speed and volume of traffic was constantly raised throughout the questionnaire by concerned residents.

64% **of all households** said the speed of vehicles was too fast (particularly traffic on the Wing to Whitchurch Road).

11% of all households thought that the crossroads was dangerous.

9% **of all households** felt there were simply too many vehicles using the village roads.

7% of **all households** wanted to see more traffic calming in the form of road narrowing, additional flashing speed warning signs or different road surface.

6% of **all households** said that the flashing speed sign was ignored (half of this group said this was because no action was being taken against offending drivers).

6% **of all households** would welcome a restriction of HGV size through Cublington.

3% of **all household**s cited poor parking blocking the entrance to the play area.





5.2 DO YOU HAVE ISSUES WITH PARKING IN THE VILLAGE?

Of all the households 50% did have issues, 41% did not and the remaining 9% did not answer this question. Many concerns were raised but problems arising from inconsiderate parking were almost unanimous.

46% of all households identified parked cars causing poor visibility and inconvenience for residents accessing their properties.

The areas of the village that respondents felt were most seriously affected were:

High Street (25% of all households), Bell Close (10%) and Wing Road (6%). These problems arose from people attending the Unicorn Pub/Church and dropping off and picking up from the Nursery School.

Additionally, 8% felt there were inadequate parking facilities.

4% cited parked cars as reducing visibility at the crossroads and therefore dangerous.

However on a positive note 3% of all households felt that parked cars acted as an effective means of traffic calming.

One or two households suggested solutions such as residents parking, an underground car park for the Unicorn and compulsory parking in front gardens.

5.3 DO YOU HAVE ANY ISSUES WITH AVAILABILITY AND CONDITION OF FOOTPATHS IN THE VILLAGE?

(Please note there was confusion interpreting this question pavements/country walk paths).

Of all the households the majority (58%) did not have any problems, 38% did cite problems and 4% left this question blank.

Households who did have issues with the footpaths raised the following concerns:

16% **of all households** cited poor maintenance of footpaths particularly over hanging branches.

11% **of all households** cited insufficient footpaths (footpaths to the village boundaries, outside the nursery school, Roses Close, Stewkley Road, Aston Abbotts Road)

4% of **all households** felt footpaths were not wide enough.

1% of **all households** were concerned about the unkempt state of the walkers' path behind the Old Nursery and Roses Close/ stiles to be replaced by "kissing gates"/ the need for a pedestrian crossing.

In addition *one resident commented that properties refurbished by the council had reduced parking spaces.*

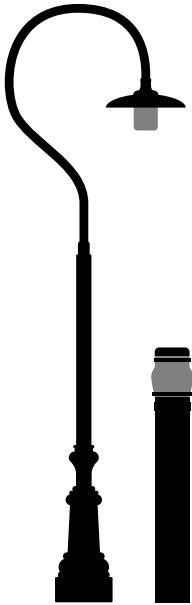
5.4 DO YOU HAVE ANY ISSUES WITH THE CURRENT AMOUNT OF STREET LIGHTING?

The majority of households (65%) did not have any concerns, 27% did have issues and 8% left this question blank.

The 27% *of households* that did have issues were very divided, more than half felt there was insufficient lighting while a third felt there was too much lighting (some in this group felt the street lights were on for too long).

Areas identified as needing new/additional street lighting were Silver Street, High Street, outside the Church, Aston Abbots Road, Chapel Path, Ridings Way to Bell Close, and the pathway to Orchard Ground.

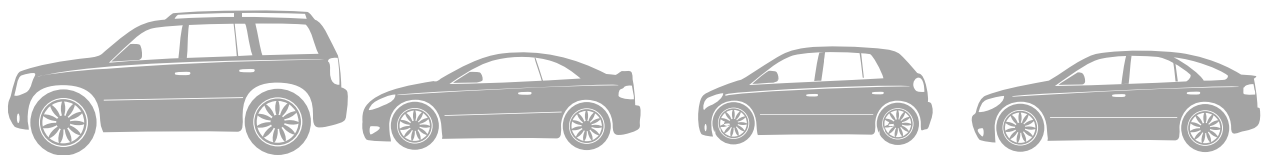
Some residents also noted that not all street lights were functioning correctly and that the street lights should function at a lower intensity.



5.5 ANY OTHER CONCERNS PLEASE SPECIFY?

Only 8% *of all households* answered this question and expressed concerns about the longevity of repairs to potholes /condition of roads, drainage issues on the Wing Road, speeding, and rural footpaths blocked by local landowners.

A few respondents used this section to make suggestions which included a plea to bring back the annual firework display and another was to make the High Street pedestrian only.



6. TRANSPORT

6.1 ACCESS TO MOTOR VEHICLES.

Of all households:

93% had access to at least one motor driven vehicle
(car, van, motor cycle)

72% *of all households* had access to two or more vehicles

5% *of all households* had no access to motor vehicles

2% did not answer



6.2 USE OF PUBLIC TRANSPORT.

In 25% ***of all households*** there is at least one person who relies on public transport, half of these use public transport on a daily basis and the other half use on a weekly basis.

Of all households 47% never use public transport, the remainder rarely use public transport

Almost 24% ***of all households*** consider public transport to be inadequate for their needs, reasons given being:

The frequency of buses to and from towns not adequate for shopping, hospital or return journeys,
late services inadequate,
weekend services inadequate,
links to Stoke Mandeville Hospital and MK inadequate.

Should improvements to services be made then 41% ***of all households*** identified that they would consider using public transport. It was identified that it would be particularly useful for young people to use the bus rather than be driven. Whilst other respondents felt that it would enable greater use of nearby train services.

CUBLINGTON PARISH COUNCIL PARISH PLAN 2012

Should you wish to discuss any item in this document then please contact your local Parish Councillor:

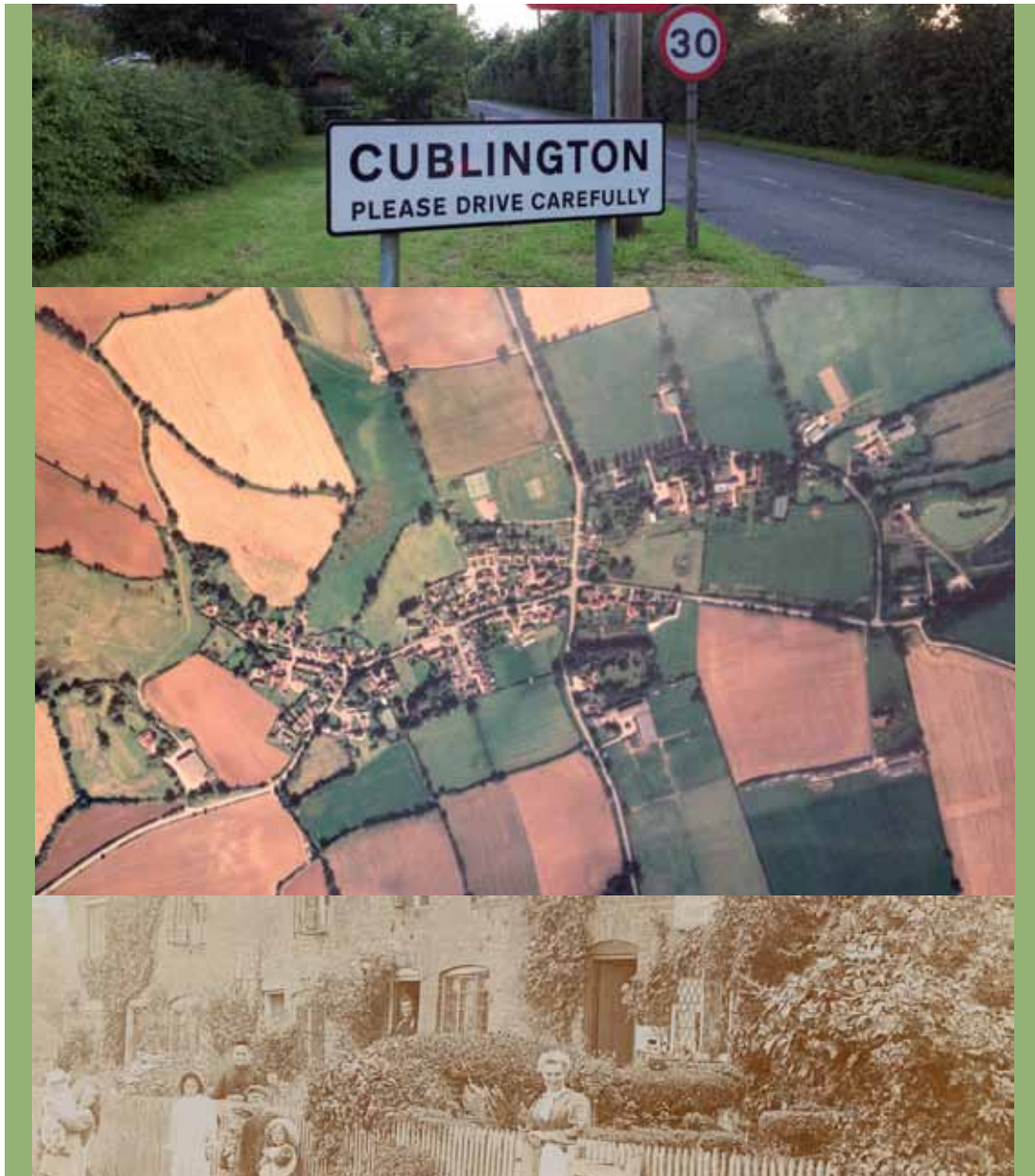
Hugh Vale (Chairman) - 01296 681107

Alan Yates - 01296 681878

Gilly Jenkins - 01296 682615

June Barrowclough - 01296 681780

CUBLINGTON PARISH COUNCIL



**AN ONLINE VERSION OF THE PARISH PLAN 2012 IS AVAILABLE TO
DOWNLOAD VIA THE WEBSITE
WWW.CUBLINGTON.COM
PARISH COUNCIL-PARISH PLAN**